

GWL-S1800 Security Lock For Laptop

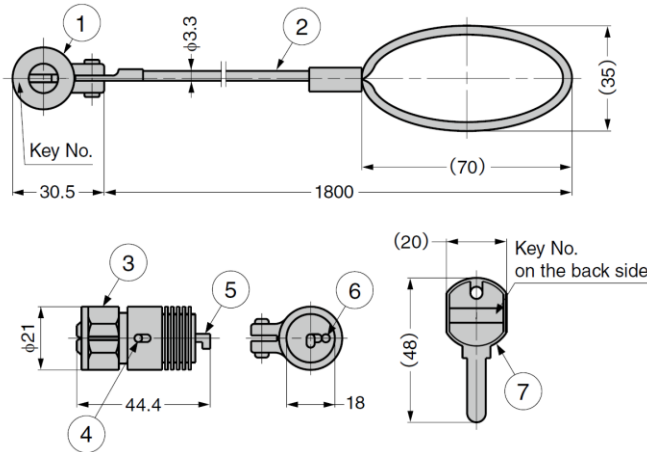
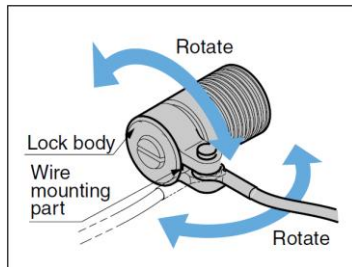
Features

- Wire lock suitable for security of laptop and TV with D terminal*.
* optional adapter is needed, can also connect with GRS-232C connector port and RGB terminal
- Wire length: 1,800 mm
- Rotatable lock body and wire mounting part allow for flexible wire movement (Fig.1)
- 250 key changes available. Master key system available on request (max. 250 key changes per master key)
- Key can be removed when locked (90° rotation)
- Wire diameter $\varnothing 3.3$ mm

Sold Separately

- Master key **GWL-S1800MK1** (made-to-order)
- Adapter **GPC20K**

Movement (Fig. 1)

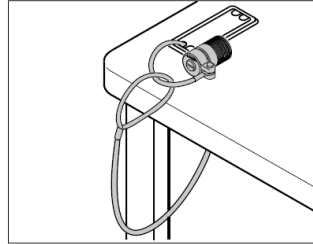


| No. | Part Name | Material | Finish |
|-----|-------------------------|--------------------------|-------------------|
| ① | Lock Body | Zinc Alloy (ZDC) | Satin Nickel |
| ② | Wire | Steel | PVC Coating/Black |
| ③ | Cover | Zinc Alloy (ZDC) | Nickel |
| ④ | Cover Retaining Shaft | Steel (SWCH) | |
| ⑤ | Engaging Section | Stainless Steel (SUS304) | Plain |
| ⑥ | Rotation Stopping Shaft | Stainless Steel (SUS303) | |
| - | Spring | Stainless Steel (SUS304) | |
| ⑦ | Key | Brass | Nickel |
| - | Key Ring | Stainless Steel | Plain |

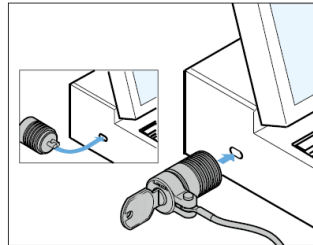
| Part No. | Key Type | Master Key System |
|--------------------|-------------------|-------------------|
| GWL-S1800-B | Keyed Differently | With |
| GWL-S1800-D | Keyed Alike | Without |



Installation

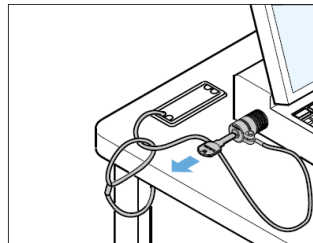


Put the wire through a hole on desk and loop



Insert the cylinder into the security hole

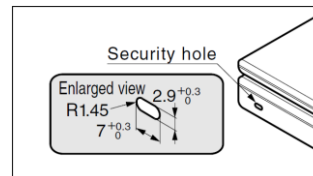
Please do so in unlocked position as shown on left.



Turn the key 90° counter-clockwise to lock and remove the key

Ensure that the lock is securely locked.

Before Installation



Please make sure security hole is as shown left.

Otherwise, it cannot be installed.

GPC20K Adapter

Features

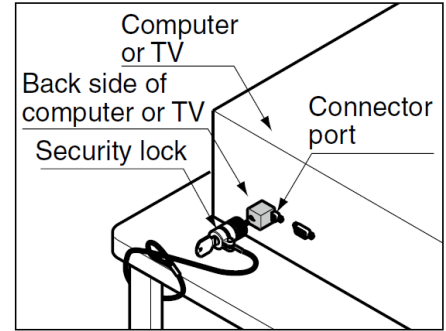
- Adapter to connect security lock with laptop and terminals. Terminal can be connected with: RS-232C, D Terminal, RGB Terminal
- Align with one side of terminal mounting screw part on the back side of laptop or TV and fix with screw. And then secure engaging section of security lock to security hole of adapter.

Notes

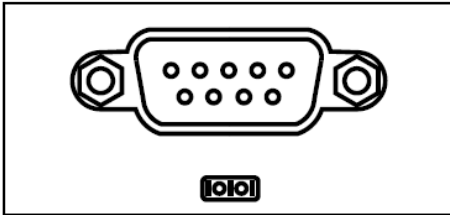
- Please install so that engaging section (L-shaped part) of security lock is at the side marked with ※ as shown

Parts Included

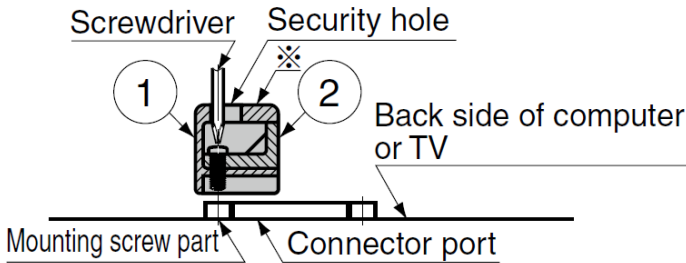
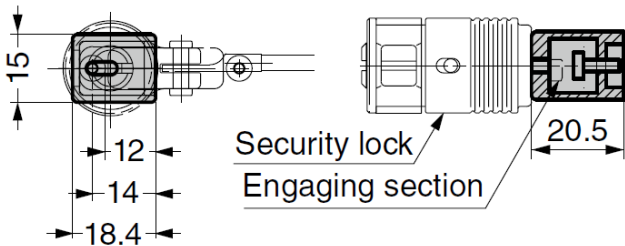
- Pan head screw No.4-40UNC×8



RS-232C Connector Port



A connector attached on the back side of the computer (as shown on left), which is also known as serial connector



| No. | Part Name | Material | Finish/Colour |
|-----|-----------|------------------|---------------|
| ① | Body | Zinc Alloy (ZDC) | Nickel |
| ② | Cover | ABS | Black |

| Part No. | Material | Finish |
|-------------|------------------|--------|
| GWL-P1800-B | Zinc Alloy (ZDC) | Nickel |